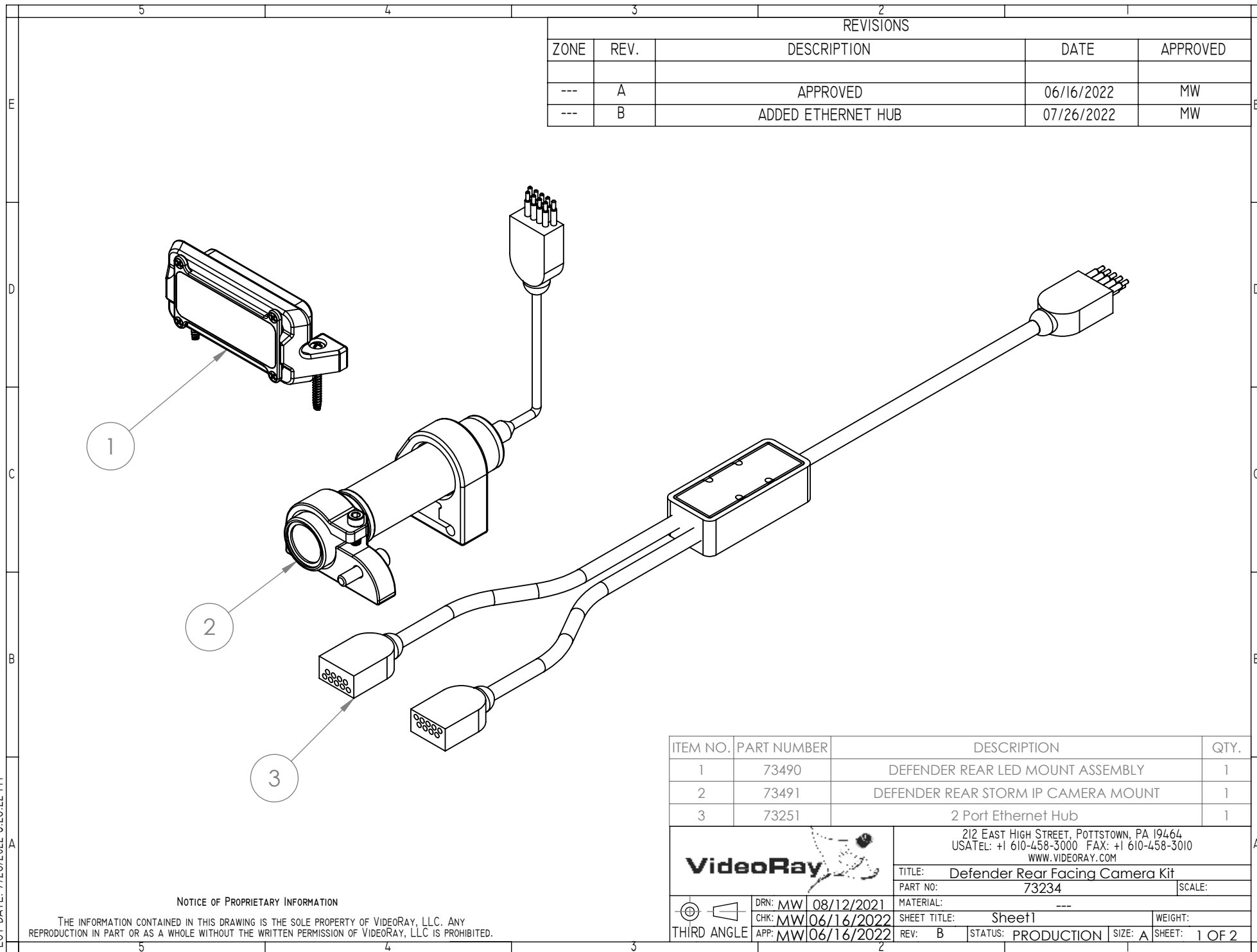


PLOT DATE: 7/26/2022 3:26:22 PM



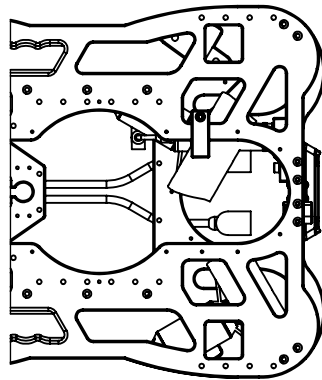
REPLACE THE 2 EXISTING SCREWS THAT FASTEN THE TETHER MOUNT PLATE TO THE TOP FRAME PLATE WITH #8 x 1-1/2 PAN HEAD PLASTITE SS SCREWS TO SECURE LED MOUNT TO THE FRAME

USE M6 SHCS HERE

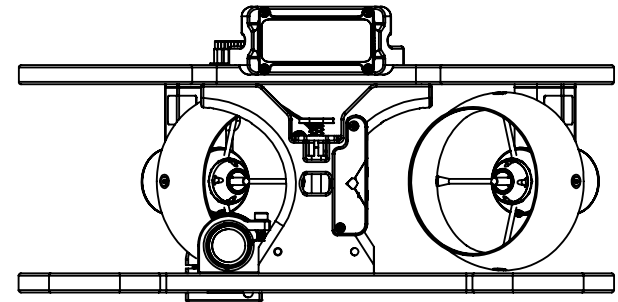
PLACE ETHERNET HUB WHERE YOU CAN FIT IT; THIS SPOT IS JUST FOR A VISUAL, IT WILL NOT FIT HERE

NOTE:

THE DEFENDER REAR STORM IP CAMERA MOUNT CAN BE PLACED ON EITHER SIDE OF THE FRAME



BOTTOM VIEW



REAR VIEW

VideoRay



THIRD ANGLE

drn: MW 08/12/2021
chk: MW 06/16/2022
app: MW 06/16/2022

212 East High Street, Pottstown, PA 19464
USATel: +1 610-458-3000 FAX: +1 610-458-3010
www.videoray.com

title: Defender Rear Facing Camera Kit
part no: 73234
material: ---
sheet title: Sheet2
rev: B status: PRODUCTION size: A sheet: 2 OF 2